

# BET SHIRA

BULLETIN

FEBRUARY 2022

SH'VAT/ADAR, 5782

בית שירה



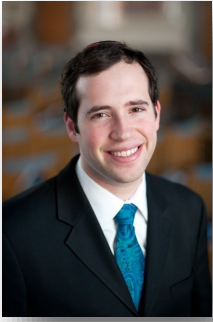
BET SHIRA CONGREGATION

7500 SW 120TH STREET, MIAMI, FL 33156

305-238-2601 | BETSHIRA.ORG

<b>3</b>	ARTICLES
<b>10</b>	MAZAL TOV
<b>11</b>	IN MEMORIAM
<b>12</b>	SISTERHOOD ANNOUNCEMENTS
<b>18</b>	UPCOMING EVENTS
<b>20</b>	EVENTS AT BET SHIRA
<b>24</b>	TRIBUTES
<b>26</b>	ANNOUNCEMENTS

# TABLE OF CONTENTS



# Rabbi Ben Herman

RABBI@BETSHIRA.ORG

## What Bet Shira Means To Me

---

The first time I ever heard of Bet Shira Congregation was in October 2018, when I asked one of my colleagues about it and he replied, "I hear it's a wasp nest." Upon applying to Bet Shira, I learned that nothing was further from the truth. I was interviewed by an impressive Search Committee led by current President Steve Goldstein and Past President Linda Trupman. At my in-person visit one member of the committee spent an hour and a half with Ariela while Karina, Leora and I toured the Early Childhood Center. We were impressed not only with the Shabbat program but with the myriad offerings of the Early Childhood Center, including Generations Day, the Shalom Sefer Book Fair and Family Holiday Bridges. We were also impressed by Shabbat morning, when Mitchell Horwich welcomed Karina, Ariela and Leora to the Family Corner and by the Kiddush Lunch prepared by Tobe Marmorstein and the Sisterhood Women-with one of the most impressive displays of Kiddush, a washing station and motzi with an Emanuel Challah Cover that I have ever seen. We spent Sunday morning at the Purim Carnival, the best synagogue carnival I have ever been part of, with a panoply of outdoor games, pizza and Snow Cone truck.

Bet Shira has always brought its best foot forward. Attending Camp Gilah was one of the best summer experiences my children have ever had, each week with an attraction such as a magician, a petting zoo and Disney characters. Four congregants opened their homes to me, including President Elect Stuart Koenigsberg and Sisterhood President Debby Koenigsberg. Reinstating the Drive-Through Sukkah and creating the Drive In Shabbat are programs I will never forget, not to mention Havana Nights and our 36th Anniversary Bash. I learned how to play darts and relearned dominos, while enjoying axe throwing along the way. I met some incredible people who became among Bet Shira's most active new members and are still going strong. The Judaica that people bought for my kids, from an Aleph Bet Tape Measure, to Leora's First Siddur, are also things I will not forget. In addition, partnering with two incredible Executive Directors, the best Office Staff I've ever worked with, Torah reader extraordinaire and musician Avron Smolensky, Paul Hoyle who performed at my Installation, Cantor Andres Levy and Cantorial Soloist Sharon Alcalay-Leibovici and last but not least our amazing Musical Director Dr. Alan Mason have been fun, enriching, spiritually rewarding and unforgettable.

People often think that a rabbi's final months at a congregation are a lame duck period. Not so according to Rabbi Bill Lebeau, who said there is never such a thing as a lame duck rabbi. I still am as devoted to Bet Shira Congregation as I was when I was warmly welcomed in, and I will be through my departure in mid-June. The wasp's nest that was talked about by my colleague couldn't be further from the truth-this is an incredible community and I am honored to be part of it.

*Ben Herman*



# Steven Goldstein

PRESIDENT@BETSHIRA.ORG

## A Message from the President

---

As we move into 2022, with winter break and New Year's Day in the rear-view mirror, Bet Shira faces uncertainty in some regards but can take comfort in our resilience as a congregation.

The Covid surge from the omicron variant struck, just as everyone thought we were turning a corner. While this surge slowed down our gradual transition from virtual gatherings back to live gatherings, and even led us to shut down in-person services for a couple of weeks, we are grateful to the members of Bet Shira in the medical profession, who have helped us establish the protocols to reopen. We continue to monitor the situation and look forward to moving back towards in-person assembly as conditions improve.

While we have not yet selected our spiritual leader for the upcoming year and beyond, our Rabbi Search Committee continues its work. We have conducted preliminary interviews with several candidates and are bringing some of them into the synagogue so that you get the opportunity to see them in action and meet them first-hand. From this group, we expect to be able to select our next Rabbi.

Our Real Estate Committee continues to search for the best way to secure our financial future by exploring options to sell or lease portions of the property. By making under-utilized space work to our benefit by providing us with a reliable income stream, we look to stabilize our budget and enable us to continue offering the worship, programming and sense of community that has characterized us for the past 36 years.

While we don't know exactly how all of these uncertainties will play themselves out, we can still count on the offerings that our membership has come to appreciate. We continue to celebrate B'nai Mitzvah and are excited about seeing the talent of our young people. We are preparing our upcoming celebrations of Purim, followed soon thereafter by Pesach. We have programs to satisfy your different interests, whether it is our Business Networking Group, our Sisterhood, our bike riding group, our adult education lectures and courses, our cooking classes or our book club.

I look forward to seeing you, whether at the synagogue or on my computer screen.

Steven Goldstein,  
President





# Chelsea Rego

CREGO@BETSHIRA.ORG

---

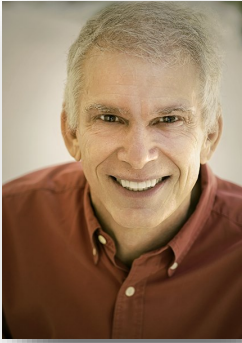
It's important to reflect on the positive that Bet Shira has experienced over the last few months. Our 36<sup>th</sup> Anniversary Celebration was a true success. We raised over six figures in tickets, sponsorships, and virtual silent auction. Our attendance at the event was unprecedented filling the entire courtyard with dancing, joy, and laughter. It was a reminder of how generations shall continue to celebrate such a caring community. Our doors stayed open to give back to the community by partnering with Greater Miami Jewish Federation during Thanksgiving, celebrating Hanukkah together, conducting the Latke Cookoff, hosting our monthly children's shabbat service, and celebrating simchas on campus as a community. In the preschool our numbers have nearly doubled from when we started the school year. We are close to our numbers of when we had to close the doors to our preschool to keep our children and staff healthy. Our staff have become a closer family celebrating births of their own children. There have been events including a Thanksgiving celebration, singing Hanukkah tunes and lighting the menorah, and beautifying our campus with flowers and herbs during Tu B'Shvat. For the first time since March 2020, we welcomed grandparents to our campus to celebrate them. The children created masterpieces for their grandparents and sang and danced with them on the field. I had chills as I saw the joy in everyone's face. The Jewish Learning Center children have continued to learn and grow their Jewish and Hebrew knowledge. I have had the honor to teach some of our younger students for the past couple of months and it has been an amazing experience. They continue to show improvement every week. Their learning happens in the classroom as well as at Junior Congregation on Saturday mornings and at events such as the Latke Cookoff, Tu B'Shvat event in the park, World Wide Wrap, and attending synagogue events.

In December we received our notice that our second SBA loan was forgiven. We also obtained a letter from FEMA with the "thumbs up" to start spending money on our security grants. We are hardening our campus and are looking forward to feeling more secure here as we gather. Also, as we had done in 2019, we are planning an active shooter training. This will be offered virtually as well as in person. We are also looking towards the future with finding the best fit for Bet Shira to monetize our property. There are offers on the table that are being vetted by our dedicated Real Estate Committee.

Searching for a Rabbi is never an easy feat. Joan and Richard have been instrumental in receiving over ten applicants and conducting half a dozen interviews. We have invited a couple of candidates for weekends to meet congregants and lead services. As more details are finalized we will send information out to all via email.

If you stop by my office you will see me smiling because I am thankful to be part of a caring, loving kehillah.

Chelsea Rego  
Executive Director



# Dr. Alan Mason

DRALANMASON@HOTMAIL.COM

## Music Director's Report

---

Jewish choral music transcends a rich and diverse landscape of styles, types, genres, and ensembles. Choral singing in the synagogue enhances worship, adds to the festivity of the service, and the sacredness of the moment. Choral singing in the community creates relationships, camaraderie, and nurturing. Choral singing among the young creates Jewish and continuity, and teaches text, history, and traditions. All three of these wonderful types of Jewish choral music play an active part in sustaining Jewish life.

Friday evening, February 25th, at 6:30 p.m. is Choral Shabbat, featuring the professional choir that so beautifully enhanced our 36th Anniversary Celebration last November. Now named the Bet Shira Choir, this choir of 8 professional choral singers brings vibrancy, beauty, drama, and excitement to the music Sharon Alcalay-Leibovici and I will be bringing you throughout the service.

The newly formed South Florida Jewish Community Choir meets on Thursday evenings at 7:00 p.m. at Beth Moshe Congregation, 2225 NE 121st Street in North Miami. With little to no fanfare and announcement, 25 Jews found out about the first rehearsal and showed up to become charter members. The choir welcomes members from all backgrounds and all levels of experience.

Please contact [southjewishcommunitychoir@gmail.com](mailto:southjewishcommunitychoir@gmail.com) for information.

HaZamir Miami, a Jewish teen choir directed by me, is part of a larger choral music curriculum called HaZamir: The International Jewish Teen Choir. Four hundred Jewish teens across the country are in HaZamir, studying an advanced choral curriculum that teaches Jewish content, history, and religion, while building Jewish leadership skills.

I look forward to seeing you in our beautiful Sanctuary for Choral Shabbat on Friday, February 25th at 6:30 p.m.

Dr. Alan Mason,  
Director of Music



South Florida Jewish Community Choir.



HaZamir Miami, a chapter of HaZamir: The International Jewish Teen Choir.



# Mickey Shlachtman

RITUAL @BETSHIRA.ORG

---

Masked or unmasked?

What's not to love about Purim? Sober or tipsy? Cousin or Uncle? Eating or Fasting?

Truth or Lies? Mordechai or Haman? The most powerful ruler in the world or a drunken buffoon?

A clever, but evil, prime minister who was fooled into believing the queen of the most powerful ruler in the world was attracted to him?

Duplicity a virtue?

A king who could dispatch his wife for disobeying, with no remorse?

Eunuchs plotting? A beauty contest to determine who would mother the next king?

What did Esther learn from Bathsheba?

What did Esther's grandson have to do with rebuilding the Temple?

Purim will be the only holiday when the Messiah comes?



# Debby Koenigsberg

BET.SHIRA.SISTERHOOD@GMAIL.COM

---

In the same way we think of a kitchen as the heart of the home, Sisterhood has long been the heart of Bet Shira through the preparation, creation and distribution of food. Even though we have faced some ongoing challenges with COVID restrictions, we continue to contribute to the many ways we all make new and old "Food Memories".

Quite a few years ago, many of our fabulous home chefs brought their talents together and created our very own Sisterhood Cookbook "B'tayavon! Enjoy your Meal". This fabulous compilation of both traditional holiday fare and easy to prepare 'everyday' meals, contains over 1000 recipes. The original collection was expanded with a supplement that is easy to insert in the original binder. These cookbooks make a fabulous gift for those who are relatively new to the kitchen and those who are well established and accomplished home chefs. They are \$36 each, 2 for \$60 or 3 for \$75. Yes, people are getting away from using actual printed books because everything can be found on the Internet, but I know personally I need to have that recipe in front of me while I'm preparing a meal. This is an incredible collection of delicious, time-tested favorites as well as options to step outside the box when it comes to cooking. You can purchase them in the Executive Office or contact me.

Sisterhood's very own chefs, Tobe Marmorstein and Velma Papier, our hosts of "What's Cooking with Tobe & Velma" choose a few recipes from our cookbook and prepare them with you via Zoom. See the Synagogue Calendar for dates and times and to find out "What's Cooking with Tobe & Velma." They make entrees, side dishes, desserts and more. It's always a fun hour especially when they start pouring the wine!

Last month Sisterhood had a Green's Babka Sale where we delivered those scrumptious babkas that come all the way from Brooklyn! We want to thank everyone who ordered and we take **NO RESPONSIBILITY** for the extra weight gain. Those pastries are worth the indulgence!!!

Be on the lookout for two important order forms (that will be coming to you both via email and 'regular' mail) as we launch our Hamantaschen sale in time for Purim AND the Miss Chocolate Barton's Passover Chocolate sale.

Hamantaschen PRE-Orders are going through February 25th. Choose from six fabulous flavors, sold by the dozen (for \$10 per dz.) ...or buy a dozen of each! We offer Apricot, Prune, Poppy (Mohn), Blueberry, Chocolate Chip or Assorted (which is Strawberry, Apricot and Raspberry, 4 each). Get your orders in ASAP via email to Nancy Crair at [crair@aol.com](mailto:crcrair@aol.com) or hardcopy to the sisterhood mailbox in the office. Delivery starts March 6th (at our Purim Carnival) and continues on Wednesday March 9th. These cookies as all our delicious pastries, freeze well and can be enjoyed throughout the Spring & Summer.

Speaking of Summer and warm weather, Miss Chocolate has opened our Barton's Passover Chocolate Online Sale for a very short window. Trying to beat the heat and ship Chocolates before we get into the melting temperatures, we have a cutoff for on-line orders of FEBRUARY 18TH. This will allow the company to monitor temps and ship when it's optimum for the Chocolate. Whether they make it in your home until Passover without being completely gobbled up, is totally up to you. Ordering is done online through the Miss Chocolate website- see the order form for instructions.

While we are talking Passover, no holiday table gathering (of any size) is complete without beautiful flower arrangements delivered to your door. As always you can choose from round or oblong shape, white or multi-colored. Each arrangement is \$45- including delivery. This year, Passover and Easter are on the same weekend so please consider spreading a little beauty to friends and family of all religious backgrounds.

I'm getting hungry writing this article so it's time to sign off!  
Thank you all for the many ways you support Sisterhood.

As we go from Strength to Strength,

Debby Koenigsberg

President, Bet Shira Sisterhood



# Rabbi Search Committee Report

---

We want to let everyone know that our Rabbinic Search is well underway. We have received a number of applications and chosen to interview some of the applicants. Right now we are making plans to bring in selected applicants for in-person weekends. We do plan to bring in more as we continue our ZOOM interviews.

We will notify all of you as soon as we have finalized these first in-person weekends.

Please check our weekly Constant Contact for updates.

Joan and Richie

## Adopt a Cop

---

The safety of our congregants has always been our utmost priority and that is why we continue to hire police officers to be on campus during Saturday Shabbat services. Your Adopt a Cop sponsorship helps cover the cost of the off-duty officer hired for Saturday morning services. Please indicate which date you would like to sponsor by using the QR code below and commit to a sponsorship of \$275 or above.

Ways to donate: online at [betshira.org](http://betshira.org), mail a check, or visit our office.



# BAT MITZVAH

HALEY GABRIELLE TIMMONS

February 21, 2022/20th of Adar, 5782

Haley Gabrielle Timmons is the daughter of Melissa and Jason Timmons, granddaughter of Vicki and Neal Roth and Linda Timmons and Richard Timmons, and sister to Logan and Gabriel Timmons. Haley attends Riviera Preparatory School. Haley has a passion for dance, piano, and violin. Mazal Tov Haley!



# MAZAL TOV

Mazal Tov to Danny and Naomi Bull on the birth of their son, Elijah Zvi. Proud grandparents are Robert and Stephanie Kairé Bull. Elijah Zvi was born on December 19, 2021 in Bangkok, Thailand and weighed in at 7lbs. Everyone is happy and healthy!



Mazal Tov to Lauren and Justin Roisman on the birth of their second child, Ari Jacob Roisman, who was born January 24th, 2022. Ari joins big brother David. Happy grandparents are Cheryl and Joseph Rosen and Aida and Joseph Roisman



Mazal Tov to Sheila & Penn Chabrow on the birth of their great grandson, Levi Bryan Chabrow on January 18, 2022. Levi is the son of Sheila & Penn's grandson, Bryan Chabrow and his wife, Sarah, who live in Los Angeles



Mazal Tov to Robin Shaffer and Edward Joffe on their Aufruf February 19 and marriage on February 20!

Mazel tov on the upcoming marriage of Brandon Harris and Regina Del Castillo. Brandon is the son of Jonathan and Stacey Harris and Regina is the daughter of Lawrence and Dulce Blacher and Alberto Del Castillo z"l.





# IN MEMORIAM

**Phyllis Yaffa z"l**

Wife of Dr. Jack B. Yaffa

Mother of Andy (Romy), Sam, Jodi (Ryan Kuhl), and Greg  
Grandmother of Ryan, Garrett, Hailey, Amanda, Meghan,  
Samantha, Matthew, Nicole, Logan and Dylan

**William Palastrant z"l**

Husband of Elaine Palastrant

Father of Nancy (Kerry) Sakolsky, Kathy (Tony) Kaufler  
and Patty (Dan) Albert

Grandfather of Daniel Kaufler, Jennifer Kaufler, Joshua  
Albert and Sara Albert

**Ezra Levy z"l**

Brother of Malca Flasterstein

Uncle of Efrat Horwitz

**Hedy Kovac z"l**

Mother of Zora Frances & Alex Kovac

Grandmother of Annette Frances Jasper

Grandmother of Michelle Frances Schurr

**Rachel V. Glaser z"l**

Sister of Regina Frances

**Dr. Fred Schild**

Husband of Judy Schild

It is with deep sadness that we inform you of the passing  
of our dear friend and former staff member, John  
Aristizabal on January 1, 2022. Affectionately know as  
"Mr. John", John was loved by all of the children in our  
Early Childhood Center as well as their parents and our  
entire Bet Shira community. John is survived by his  
partner Alicia Arango and his son Sebastian Aristizabal.



And

## **BET SHIRA CONGREGATION**

*Present our*

### **2022 ONLINE PASSOVER SALE W/CURBSIDE PICK UP**

Dear Congregant,

Bet Shira Sisterhood is having a Barton's Passover fundraiser for our congregation. We are trying to beat the Florida heat and therefore only can have this fundraiser for a couple of weeks so it can be shipped by the end of February to ensure that our chocolates and other goodies don't melt in transit. The sale begins today and will end on February 18, 2022. Shop for a variety of wonderful treats while supporting our temple - they are graciously giving us 40% back on all sales. For ease and accuracy, orders are only able to be placed online. For assistance with online ordering or any questions about this fundraiser, please contact Nancy Crair (786)387-5852 or [crcair@aol.com](mailto:crcair@aol.com).

Place your orders online following the directions below. You can also contact your friends and family members to encourage them to participate in our fundraiser.

Shop, Order and Pay Online:

1. Go to [misschocolate.com](http://misschocolate.com) and then "Online Store".
2. Scroll down to "Shop Now"
3. Enter our seller ID **70063** and shop.
4. Proceed to check out.
5. Be sure to select your shipping preference:
  - a. Ship your order to our organization and pickup for **no charge** (Catalog A)
  - b. ship your order directly to your home (Catalog B)
6. A pickup date will be announced for orders being shipped to our organization.

**Invite friends and family to participate in our fundraiser.**

For questions contact Nancy Crair at [crcair@aol.com](mailto:crcair@aol.com) or text/call (786)387-5852.

Thank you for your support.



# Sisterhood Hamantaschen Order Form

From Green's Bakery of Brooklyn  
**\$10 - per dozen cookies**

CHOOSE FROM A DOZEN OF THE FOLLOWING FLAVORS

FLAVORS	QTY.
APRICOT	
PRUNE	
POPPY (MOHN)	
CHOCOLATE CHIP	
BLUEBERRY	
ASSORTED (RASBERRY, APRICOT & STRAWBERRY)	



**NAME:**

---

**PHONE NUMBER:**

---

## PICK UP OPTIONS:

**DURING THE PURIM CARNIVAL:**

**MARCH 6TH**

9 A.M. - 1 P.M.

OR

**WEDNESDAY, MARCH 9TH**

10 A.M. - 1 P.M. & 4 P.M. - 6 P.M.

## PAYMENT METHODS:

• **VENMO** AT

BET.SHIRA.SISTERHOOD@GMAIL.COM

• **CREDIT CARDS** VIA SQUARE CALL NANCY

CRAIR TO MAKE ARRANGEMENTS

• **CHECK** MADE PAYABLE TO "BET SHIRA

SISTERHOOD" MAILED TO SYNAGOGUE OFFICE

# Order deadline by February 25th

Questions? Call Nancy Crair (786)387-5852



**ORDER**  
**Passover Floral**  
**Arrangements Now!**

**\$45 DELIVERED**

Arrangements will arrive on  
Friday, April 15th

Delivered to you, your friends, or your family.

*Choose from Multi-colored or White - Round or Oblong*

Orders will only be accepted via email to Iane Deutsch at  
**ianedd6747@hotmail.com**

Payment required by April 11th, 2022

Pay by check: Bet Shira Sisterhood

Send a check to: Bet Shira Sisterhood, Passover Flowers,

7500 SW 120 Street, Miami, FL 33156

or Venmo: [bet.shira.sisterhood@gmail.com](mailto:bet.shira.sisterhood@gmail.com)

*Payment must be received by the deadline to be processed.*

*No orders after Monday, April 11th, 2022*

Bet Shira Congregation's

# Choir SHABBAT



FRIDAY 02.25.22 6:30 P.M.

CHOIR SHABBAT WITH THE BET SHIRA  
CONGREGATION CELEBRATION CHOIR,  
CANTORIAL SOLOIST, SHARON  
ALCALAY-LEIBOVICI, PERCUSSIONIST  
TERESA FLORES-DIAZ, AND PIANIST AND  
MUSICAL DIRECTOR, DR. ALAN MASON.

Bet Shira Congregation 7500 SW 120th St Pinerest, FL 33156



# WHEN DISCO WAS KING

STARRING

## THE KINGS of DISCO

Former Members of  
VILLAGE PEOPLE



Join us live and in-person at Alper JCC Miami on our OUTDOOR PROFESSIONAL STAGE!

**FEBRUARY 24, 2022 | 7:30 PM**

11155 SW 112 Avenue | Miami, FL 33176

The evening will be loaded with iconic disco hits from such groups as the Bee Gees, Donna Summer, Thelma Houston, Sylvester, Kool & the Gang, Trammps, Earth, Wind & Fire, Commodores, The Brothers Johnson, Diana Ross and, you guessed it, the Village People!

Preferred: \$50 | General Admission: \$40

**Purchase tickets at [alperjcc.org/disco](https://alperjcc.org/disco)**







The 41st Annual Berrin Family

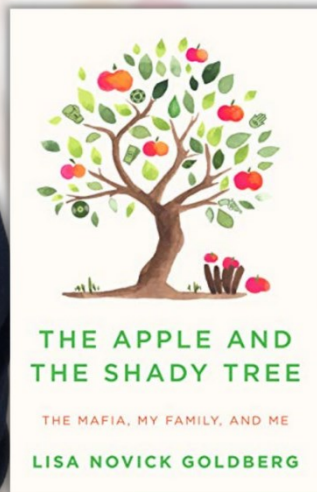
# Jewish Book Festival

AT ALPER JCC MIAMI



## LISA NOVICK GOLDBERG

*The Apple and the Shady Tree*



# Thursday, April 7 | 11 am

## Bet Shira Congregation

7500 SW 120 Street | Miami, Fl. 33156

Goldberg's memoir revolves around her dysfunctional family and the devastating effects of generational mental illness, exacerbated by the father's role as the money-maker for the Genovese crime family. Using chronological vignettes, both humorous and profoundly sad, Goldberg takes the reader into the glitzy and corrupt world of organized crime and explores her lifelong battle with anxiety and her complex love-hate relationship with her father.

### Admission: \$10

Purchase tickets at [alperjcc.org/goldberg](http://alperjcc.org/goldberg)

For more info, contact Marcy Levitt at [mlevitt@alperjcc.org](mailto:mlevitt@alperjcc.org).





# ALOHA!

JOIN US FOR A

# PURIM LUAU

Dinner followed by  
arts & crafts, music, and  
Mishloach Manot distribution!

March | 6 PM  
16TH

Family Megillah reading at 6:30 pm

Full Megillah reading at 8:00 pm

Suggested family donation of \$20

RSVP at [betshira.org/luau](http://betshira.org/luau)







# Purim Carnival at Bet Shira

**MARCH 6TH, 2022**

**10:00 A.M. - 1:00 P.M.**

**MEET US OUTDOORS AT BET SHIRA!**

**MUSIC | GAMES | FOOD | AND MORE**

**REGISTER AT [BETSHIRA.ORG/CARNIVAL](https://betshira.org/carnival)**

**SPONSORSHIP OPPORTUNITIES AVAILABLE**

**TICKET INCLUDES ENTRANCE, GAMES, AND  
ACTIVITIES. FOOD SOLD SEPERATELY.**

**TICKETS \$36 PER FAMILY**



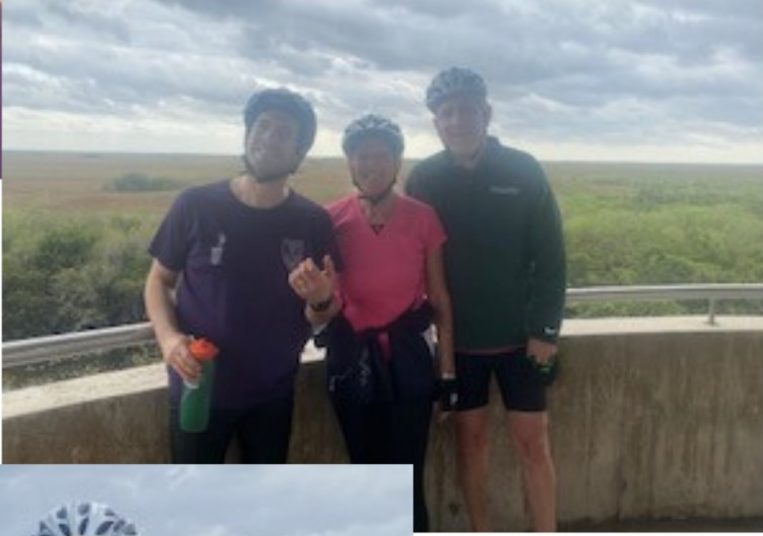


# Tu Bishvat Picnic





# SHARK VALLEY BIKE RIDE





# Disney SHABBAT







# Jewish Learning Center



# TRIBUTES

We appreciate the thoughtfulness of those who support Bet Shira Congregation by remembering and honoring loved ones through generous contributions.

---

## ADOPT A COP FUND

### *In Honor of...*

Robert Papier on his Bar Mitzvah from **Audrey Stone**

## CARING KEHILLAH FUND

### *In Honor of...*

Celebrating the birth of Morrie and Leigh Siegel's granddaughter! From **Lori and Barry Blum**

Irene and Mal Weinberger's grandson's Bar Mitzvah from **Linda and Robert Spiegelman**

### *In Memory of...*

Beloved father, Samuel Kobrin from **Joan and David Kobrin and family**

Your beloved mother, Hedy Kovac from **Joan and David Kobrin and family**

Henry Blum from **Lori and Barry Blum**

Fannie Levin from **Lori and Barry Blum**

Louis Epstein from **Murray Epstein**

## EARLY CHILDHOOD FUND

From **Gabby Iseman**

### *In Honor of...*

Eli Parker Ruskin from **Stephanie and Robert Bull**

## JEWISH LEARNING FUND

### *In Appreciation of...*

The JLC and youth group staff from **Melissa and Shimon Rubinstein**

### *In Memory of...*

Beloved Grandfather, Morris Gross from **Joan and David Kobrin and family**

Lee Binder from **Laurel and Steven Isicoff**

Dr. Lee Binder from **Fidanque Family**

## KIDDUSH FUND

### *In Memory of...*

Richard J Stone from **Audrey Stone and Family**

## MUSIC FUND

### *In Honor of...*

Alan Mason from **Sanford Shapiro**

Madelyn and Neil Messinger's grandson's Bar Mitzvah from **Linda and Robert Spiegelman**

### *In Memory of...*

David Auerbach from **Linda and Keith Truppan**

Hedy Kovac mother of Zora Frances from **Sara Horton**

## PROGRAMMING FUND

### *In Honor of...*

The birth of Eli Parker Ruskin, Mazal tov! From **Joelle and Raphael Dvir**

The birth of the grandson of Robert and Stephanie Bull, Elijah Zvi from **Sara and Steve Horton**

## RABBI'S DISCRETIONARY FUND

### *In Appreciation of...*

Rabbi Herman for all your hard work! From **Susy and Michael Novak**

### *In Honor of...*

Sarah Katz from **Daniel Katz**

The Bar Mitzvah of your Grandson, Robert Papier from **Rae Kaplan**

### *In Memory of...*

Beloved uncle, Morris Silver from Joan and David Kobrin and family

Hedy Kovac, mother of Zora Frances from **Laurie Sukel**

## RITUAL FUND

### *In Memory of...*

Beloved Grandfather, Phillip Kobrin from **Joan and David Kobrin and family**

## TIKKUN OLAM FUND

### *In Honor of...*

The birth of Eli Parker Ruskin to new grandparents Sara and Steve Horton from **Beth and Jeff Davidson**

## WHERE NEEDED MOST FUND

From **Nancy and Irvin Reinhard**

### *In Appreciation of...*

Chelsea Rego for all she does! Thank you! From **Susy and Michael Novak**

### *In Honor of...*

The arrival of Sara and Steve Horton's grandson! Mazal Tov from **Lori and Barry Blum**

Debbie and Michael Troner from **Susannah Troner**

### *In Memory of...*

Phyllis Yaffa from Robin Forman

Rose Freundlich from **Stevie and Saul Silverman**

## YAHARZEIT

### *In Honor of...*

Rabbi and Minyanaires for prayer at Minyan service from **Allison Costantino**

### *In Memory of...*

Jacqueline Papier from **Velma and Paul Papier**

Abraham Schreiber from **Velma and Paul Papier**

Shalom from **Eleanor Goldman**

Roz Zoltz from **Ellie Goldman and Lesly Soltz Diaz**

Beloved Grandmother, Bella Kobrin from **Joan and David Kobrin and family**

Natalie Liebman with love and great opera memories from **Sharon and Kenneth Glick**

Moses Wichner from **Linda and Robert Spiegelman**

Dedications

December 6th 2021 to January 31st

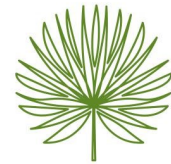


# COMPASSION. COMMITMENT. CARE

STATE OF THE ART SENIOR LIVING

**Independent Living - Memory Care - Assisted Living**

Our beautiful 8+ acre luxury senior living community, minutes from the prestigious Palmetto Bay and Pinecrest neighborhoods, is conveniently located just west of US-1 on 152nd Street adjacent to Jackson South Medical Center. Here is the ultimate choice for luxury senior living in South Florida. Amenities within the community include concierge service, luxury salon, fitness and wellness center, art studio, performing arts theater, restaurant-style dining room, two pools, piano lounge and bar, plus much more. The Oasis at Coral Reef is soon to be the hottest address in town, like being on a vacation every day of the year.



**THE OASIS**  
AT CORAL REEF

786.823.9600 | [info@oasiscoralreef.com](mailto:info@oasiscoralreef.com) | [www.oasiscoralreef.com](http://www.oasiscoralreef.com)



Now accepting reservations



# SUPPORT BET SHIRA SISTERHOOD

Bet Shira Sisterhood Cookbook \$36.00  
Gift Shop Items \$6.00+

All Items available at  
Bet Shira Sisterhood Gift Shop  
[www.betshira.org/  
sisterhood-gift-shop](http://www.betshira.org/sisterhood-gift-shop)



stay safe &  
support  
Bet Shira

BET SHIRA FACE MASK  
LIMITED QUANTITIES AVAILABLE  
CONTACT MDEAKTOR@BETSHIRA.ORG  
OR CALL MARY ANN  
AT 305 238-2601 EXT. 206

ONLY \$15



**SALE**

\$36

1 cookbook &  
supplement set

\$60

2 cookbook sets

\$75

3 cookbook sets



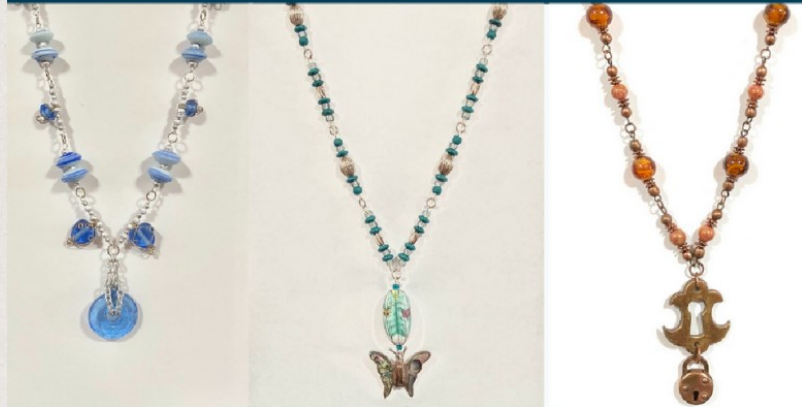
## SISTERHOOD GIFT SHOP

<https://www.betshira.org/sisterhood-gift-shop>

SHOP ONLINE




## BET SHIRA FUNDRAISER Jewelry Fundraiser



Visit Online Store at Bet Shira Website  
<https://www.betshira.org/jewelry-fundraiser>



VIRTUAL ADULT HEBREW CLASSES WITH BET SHIRA 

## *Learn Hebrew with Hagit Simkovic*

Every Monday

9:30 -10:30 AM  
Torah/Haftarah Tropes (\$150/10 classes)

10:30 - 12:00 PM  
Advanced  
Hebrew Conversation (\$200/10 classes)

12:00 - 1:30 PM  
Beginner/Intermediate  
Hebrew Conversation (\$150/10 classes)

EVERY TUESDAY

6:30 - 7:30 PM  
Beginner  
Hebrew Conversation (\$150/10 classes)

Zoom information will be sent upon registration. To register go to <https://members.betshira.org/form/adulthebrewclass> or call Mary Ann at 305-238-2601 ext 206.

# TORAH FUND

## WOMEN'S LEAGUE FOR CONSERVATIVE JUDAISM

It is time to think about your Torah Fund contribution for 2021-2022 campaign year! Your contribution to the Torah Fund strengthens and perpetuates conservative Judaism throughout the world. With your participation you can help support the five conservative seminaries to provide Rabbis, Cantors, educators, administrators, social workers, researchers, and councilors for our Camp Ramah. Our students rely on these scholarships and we are grateful for any amount that a person can give—all donations are acceptable and none is too small! Your donation can be spread out over the year and can also be made in honor of someone or in memory of someone else.

Please contact Ellen Gall for more information

Email: [icunurseellen@hotmail.com](mailto:icunurseellen@hotmail.com)

Phone: (305)596-4883





**SUPPORT OUR SYNAGOGUE  
WITH AMAZON SMILE!**



Bet Shira Congregation is part of the Amazon Smile Charity Program, an Amazon website that allows Amazon customers to choose a charity and designate to it 0.5% of every purchase.

So when you do your shopping through Amazon, whether its books, paper goods, toys, or anything you desire, do it through Amazon Smile and choose to support Bet Shira! Just start each shopping session at <https://smile.amazon.com/ch/59-2500437>.

Once there, you will automatically be supporting Bet Shira Congregation with your purchases.

**ADVERTISE IN THE MARCH**

**BET SHIRA BULLETIN**

**DEADLINE DATE: FEB. 25**

**COST:**

**BUSINESS CARD: \$36**

**1/4 PAGE: \$90**

**1/2 PAGE: \$180**

**FULL PAGE: \$260**

**Email: [marketing@betshira.org](mailto:marketing@betshira.org)**

**WORSHIP OPPORTUNITIES**

**SHABBAT**

Join us for in-person or virtual Shabbat  
Friday Nights at 6:30 p.m.

Join us for in-person or virtual Shabbat on  
Saturday Mornings at 9:30 a.m.

**MINYAN**

Join us Monday through Friday at 8:30 a.m.  
and Sunday at 9:30 a.m.

**TORAH STUDY**

Join us for virtual Parshat Hashavua  
Tuesdays at 1:00 p.m. on Zoom and  
Facebook Live

**HAVDALAH**

Join us for virtual Havdalah on Zoom and  
Facebook Live Saturday night

*Zoom links can be found at [betshira.org](http://betshira.org)*

